



**R53 M45 Charge Pipe Kit
Installation Manual** →



The kit is covered by two years warranty.

Failing to comply with our Terms and Conditions will void your warranty.

Warranty Terms and Conditions:

*Two years warranty is available **ONLY** for the kits that are installed by our authorized dealers.

The kit comes with one year warranty if it is installed by a specialized (on MINIs) garage shop.

In case of a warranty claim, customer **has to provide the installation receipt and authorized dealer receipt**, photos and videos that clearly indicates the damage and logs (if asked).

DIY installations are not covered by our warranty.

Products that are not bought by our authorized dealer network or used products are not covered by our warranty.

Vehicles with upgraded water radiators are not covered by our warranty.

Any type of modification on the kit will void your warranty. That includes heat wrapping and painting. The kit is designed to work **with an original spec car.**

If the mounting points, bypass location or any part of the engine bay that is directly connected with the installation or the operation of the kit is altered then the warranty is not valid.

If your car does not have the original crash bar spacers or if you do not use all the spacers that with the kit, then the warranty will not cover you.

Damage to the charge pipe due to failed engine mounts or frontal crashes will not be covered by the warranty.

TPE Precision has no responsibility for stolen products after the signed courier documents.

The above can change without notice.

This is not a step-by-step manual. Do not try to install the kit if you are not a trained MINI mechanic. DIY installations are not covered by warranty.



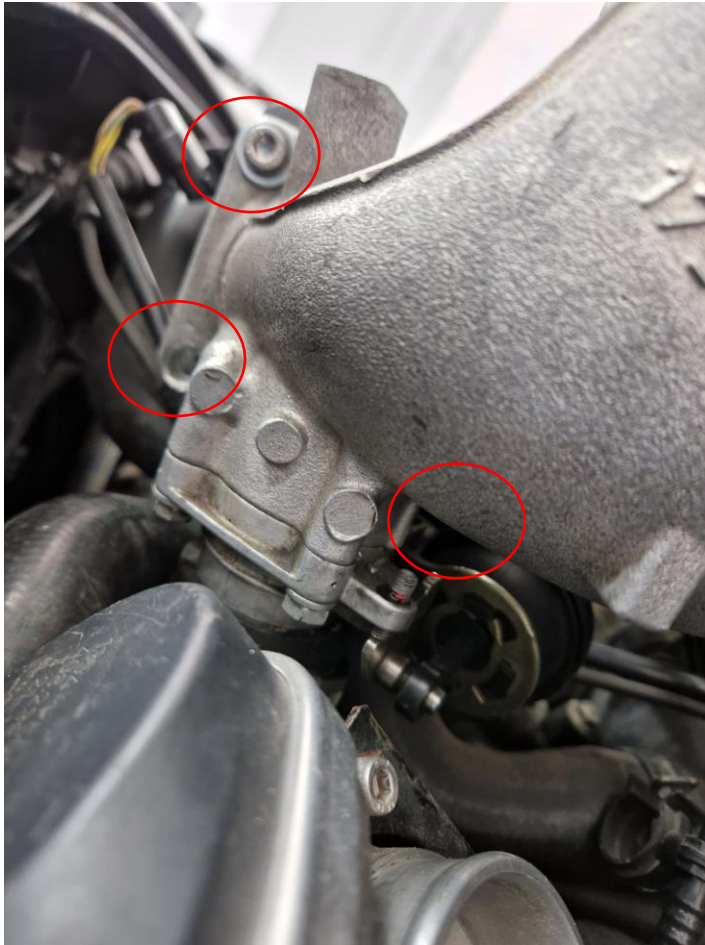
1. Remove the bumper and crash bar.



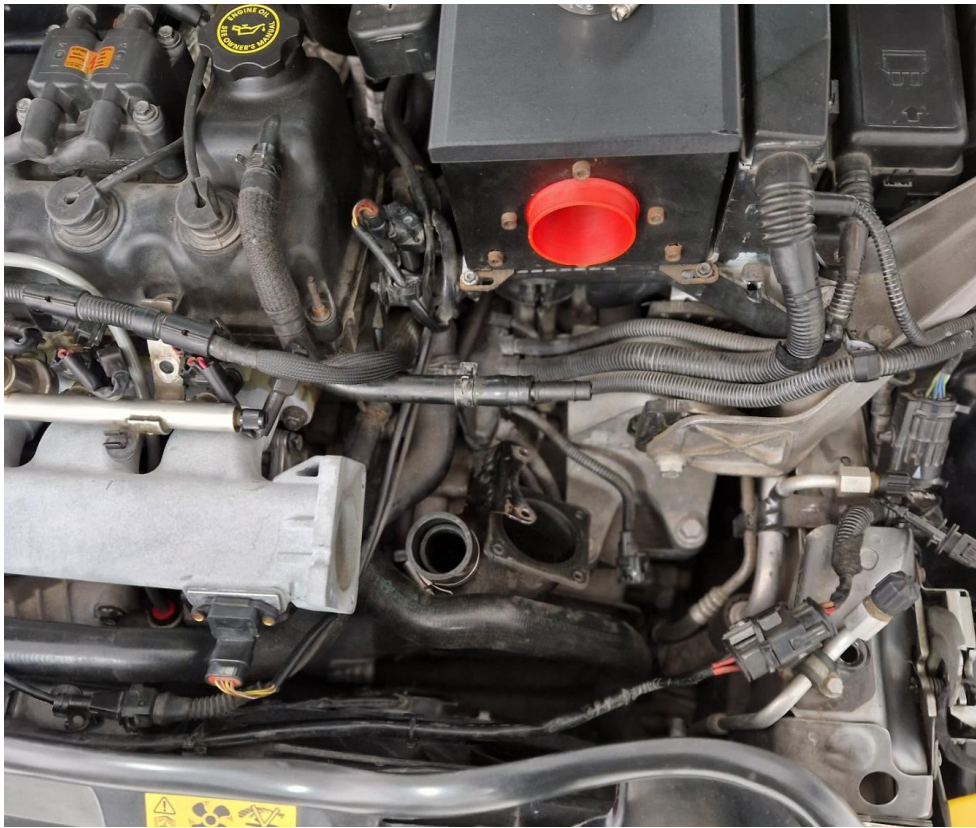
2. Remove the bolts that secure the AC radiator. Carefully put AC radiator aside and pull the plastic shroud that supports the water radiator.



3. Remove the intercooler diverter, the intercooler and the silicone hose that connects the throttle body and the airbox.



4. Remove the intercooler horn. The horn is secured by three nuts. *Photo for reference.



5. Remove the throttle body and the vacuum line that is connected to it. Then remove the vacuum line from the original charge pipe.

Optional:

-Remove the intake manifold.

-Remove the water hoses. Don't forget to bleed the system.

These will help to free up space. You can install the kit without removing them.

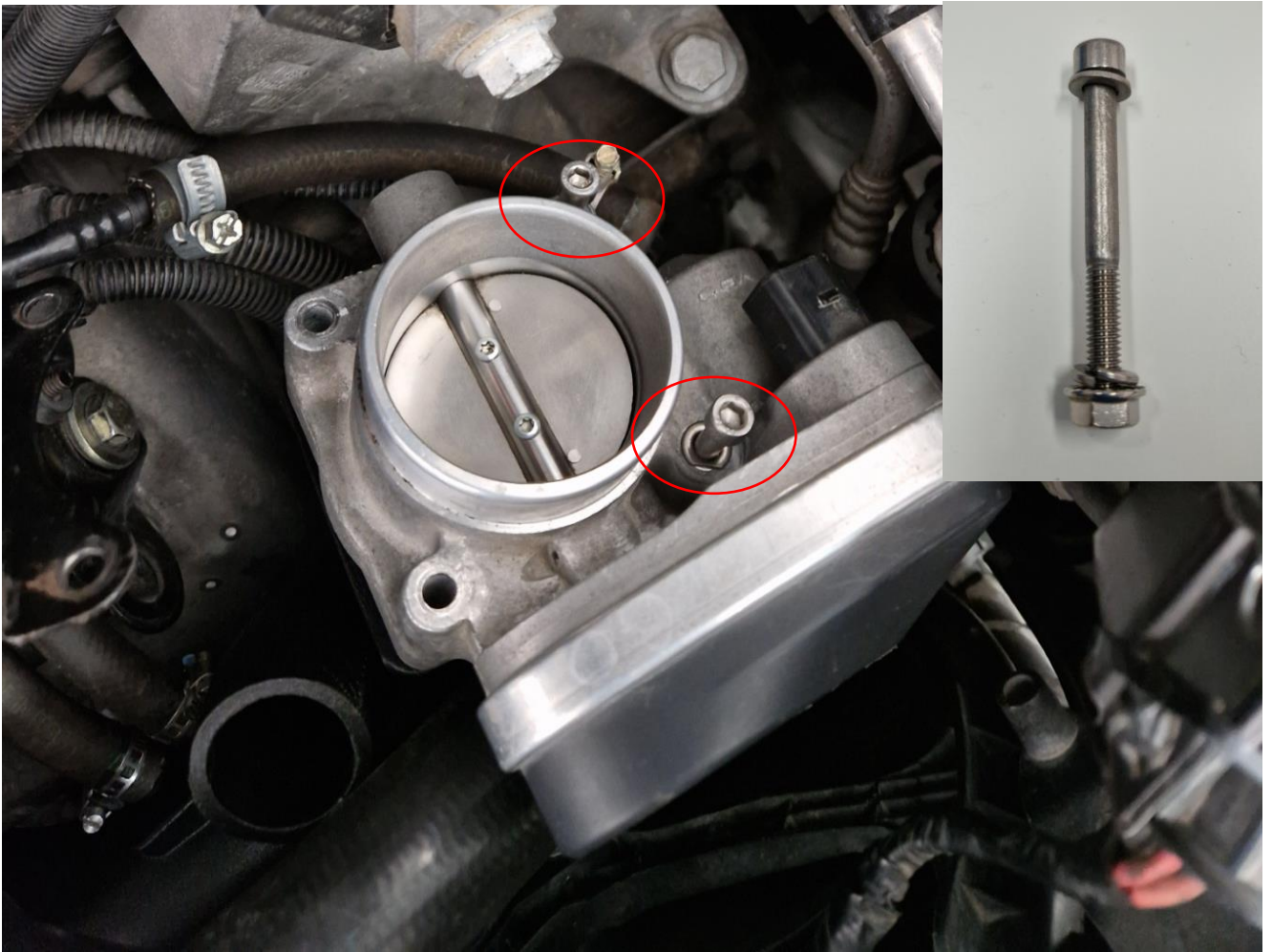
Remove the original charge pipe.

Clean the green gasket and place it on the supercharger.

**THE GREEN GASKET MUST BE INSTALLED ON THE SUPERCHARGER FIRST.
DO NOT PUT IT ON THE CHARGE PIPE AND THEN TRY TO INSTALL IT.**



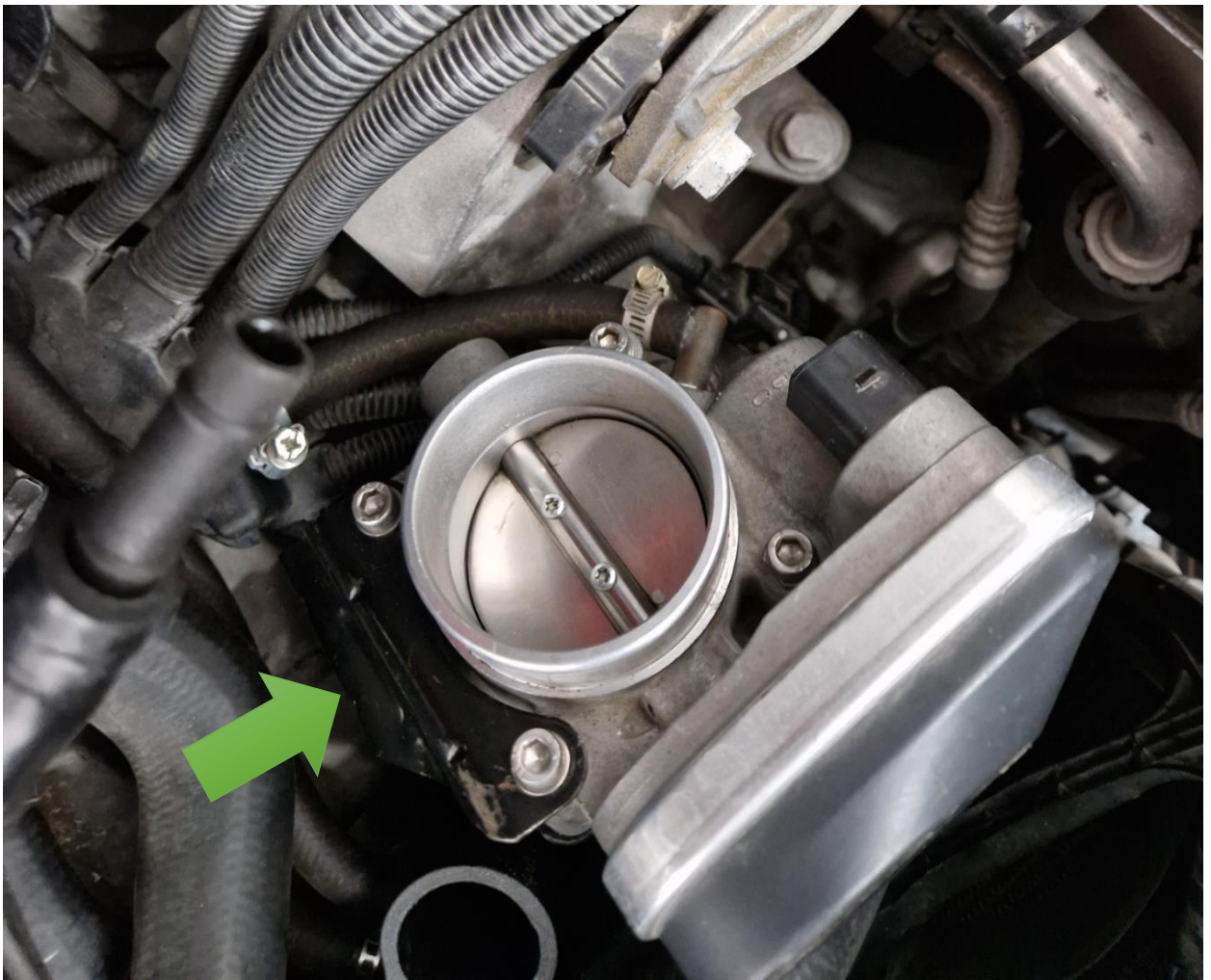
6. Connect the vacuum lines with the provided hoses and clamps.



7. Let a bit loose the throttle body bracket.
Like the photo above, install two bolts to secure the throttle body to the charge pipe. **At this stage do not torque the bolts. The assembly should be loose.**



8. Then install the third bolt as in the picture above.



9. Install the fourth and final bolt. You will have to push the bracket towards the throttle body. Once the bolt is through, torque in place the throttle body bracket.

Make sure the charge pipe is fitted correctly at the inlet of the supercharger.

Do not over torque the throttle body bolts, as this might damage the charge pipe. When you start feeling resistance stop applying torque.

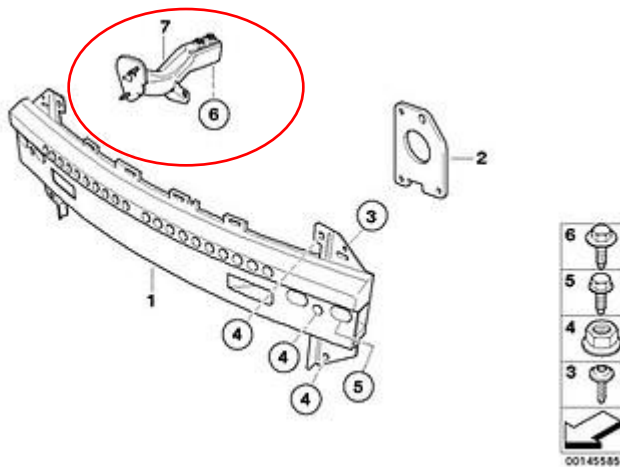


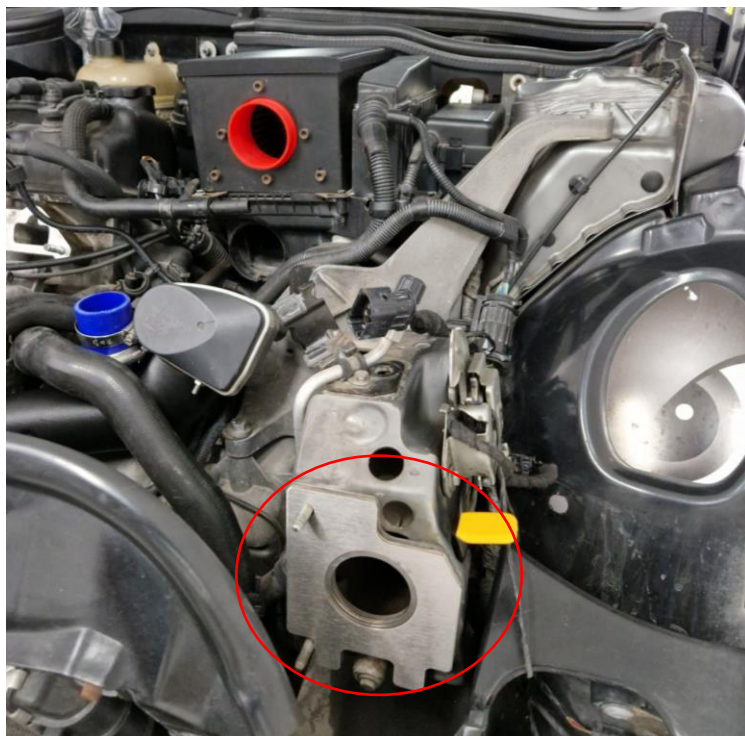
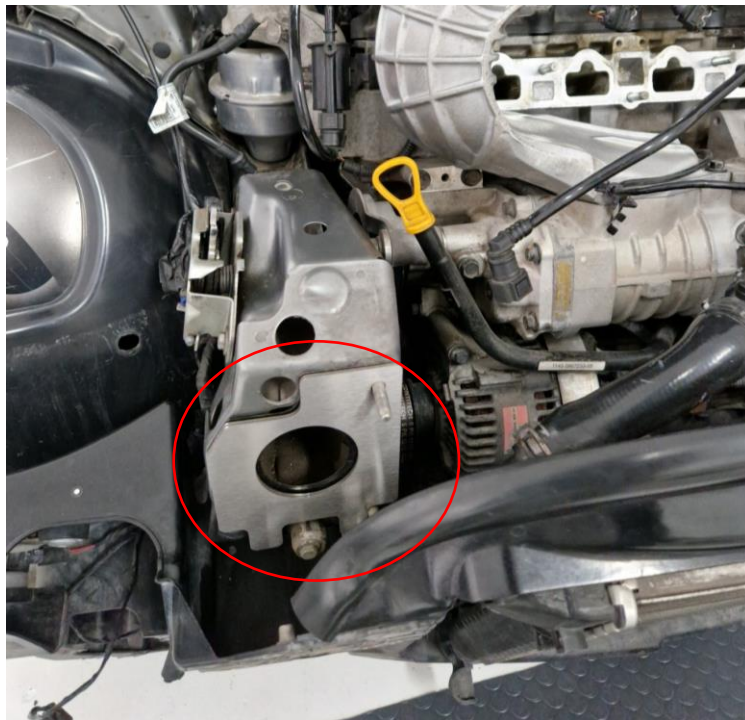
10. Install the bypass hose. Let the hose clamp loose until you secure the intercooler horn.



11. Make sure the charge pipe is fitted as in the photos.
Then proceed on installing the crash bar spacers.
For this step you will also have to remove part number 7 (see diagram below).

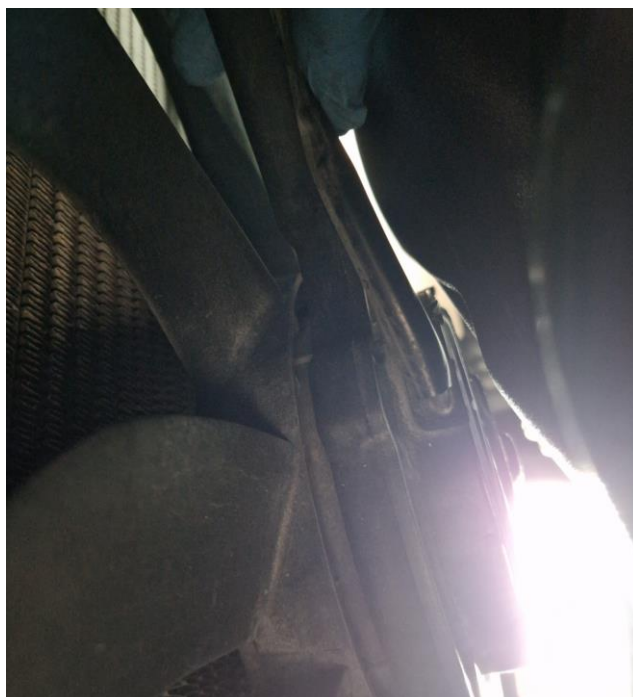
You should have 4 crash bar spacers (part number 2) from the factory.
If your car doesn't have them you can order them directly from us at info@tpeprecision.com.
DO NOT install the kit without these spacers.





12. Add three spacers in each side.

The passenger side (left hand drive cars) should have 3 spacers and the driver's side should have 7 spacers.



13. This is the correct clearance you should have after installing the spacers.